

**PROJECT: W-5306**

**EROSION AND SEDIMENT CONTROL MEASURES**

Std. #	Description	Symbol
1630.03	Temporary Silt Ditch	
1630.05	Temporary Diversion	
1605.01	Temporary Silt Fence	
1606.01	Special Sediment Control Fence	
1622.01	Temporary Berms and Slope Drains	
1630.02	Silt Basin Type B	
1633.01	Temporary Rock Silt Check Type-A	
	Temporary Rock Silt Check Type-A with Matting and Polyacrylamide (PAM)	
1633.02	Temporary Rock Silt Check Type-B	
	Wattle/Coir Fiber Wattle	
	Wattle/Coir Fiber Wattle with Polyacrylamide (PAM)	
1634.01	Temporary Rock Sediment Dam Type-A	
1634.02	Temporary Rock Sediment Dam Type-B	
1635.01	Rock Pipe Inlet Sediment Trap Type-A	
1635.02	Rock Pipe Inlet Sediment Trap Type-B	
1630.04	Stilling Basin	
1630.06	Special Stilling Basin	
	Rock Inlet Sediment Trap:	
1632.01	Type A	
1632.02	Type B	
1632.03	Type C	
	Earthen Dam with Skimmer	
	Skimmer Basin	
	Tiered Skimmer Basin	
	Infiltration Basin	
	Safety Fence	

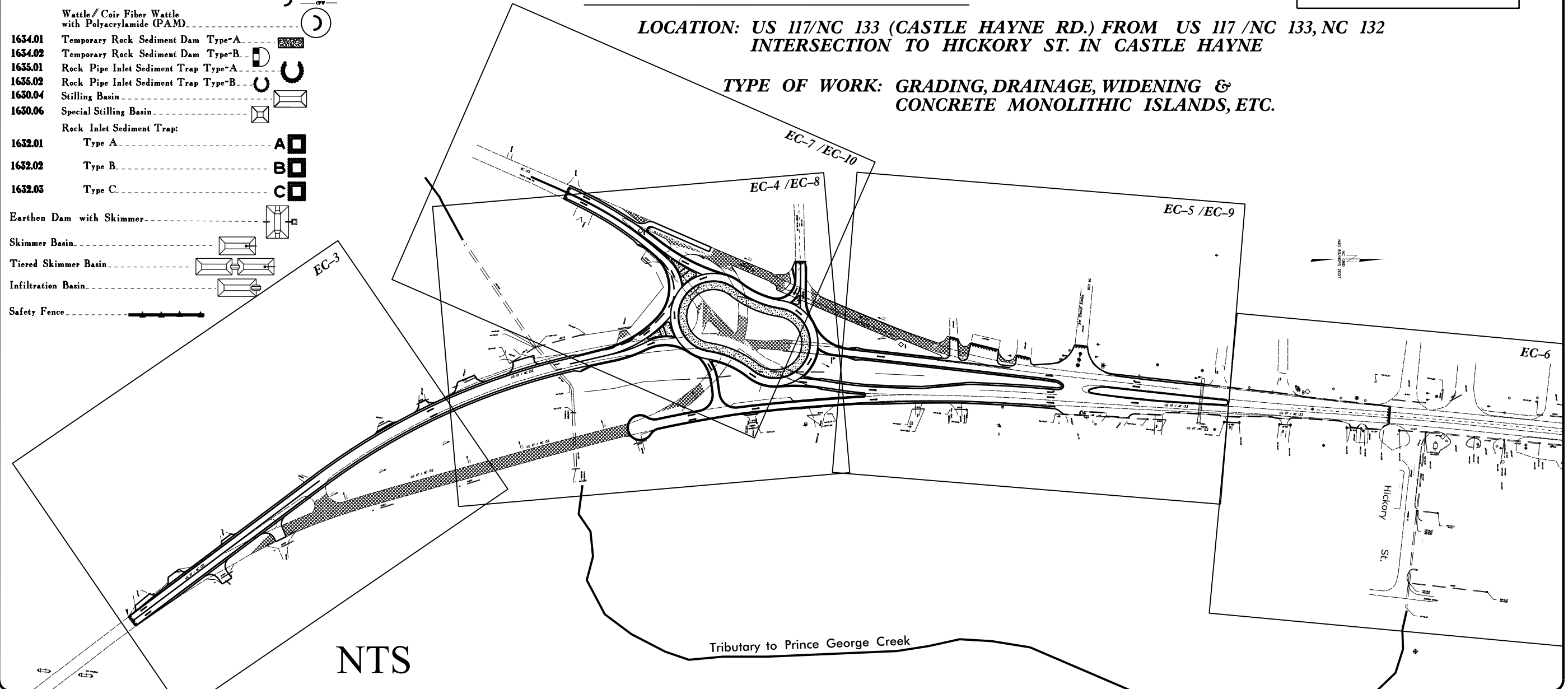
STATE OF NORTH CAROLINA  
DIVISION OF HIGHWAYS

**PLAN FOR PROPOSED  
HIGHWAY EROSION CONTROL**

**NEW HANOVER COUNTY**

LOCATION: US 117/NC 133 (CASTLE HAYNE RD.) FROM US 117 /NC 133, NC 132 INTERSECTION TO HICKORY ST. IN CASTLE HAYNE

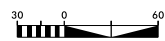
TYPE OF WORK: GRADING, DRAINAGE, WIDENING & CONCRETE MONOLITHIC ISLANDS, ETC.



STATE	STATE PROJECT REFERENCE NO.	SHEET NO.	TOTAL SHEETS
N.C.	W-5306	EC-1	
STATE PROJ. NO.	F.A. PROJ. NO.	DESCRIPTION	
46130.1.1	STP-0133(8)	P.E.	
46130.3.FR1	STP-0133(8)	CONST.	

THIS PROJECT CONTAINS EROSION CONTROL PLANS FOR EXISTING & PROPOSED CONDITIONS.

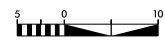
**GRAPHIC SCALE**



PLANS



PROFILE (HORIZONTAL)



PROFILE (VERTICAL)

THESE EROSION AND SEDIMENT CONTROL PLANS COMPLY WITH THE REGULATIONS SET FORTH BY THE NCG-010000 GENERAL CONSTRUCTION PERMIT EFFECTIVE AUGUST 3, 2011 ISSUED BY THE NORTH CAROLINA DEPARTMENT OF ENVIRONMENT AND NATURAL RESOURCES DIVISION OF WATER QUALITY.

For Reference Please Visit Roadside Environmental:  
[http://www.ncdot.org/doh/operations/dp\\_chief\\_eng/roadside/fieldops/downloads/](http://www.ncdot.org/doh/operations/dp_chief_eng/roadside/fieldops/downloads/)

Prepared In the Office of:  
**DIVISION 3 DDC UNIT**

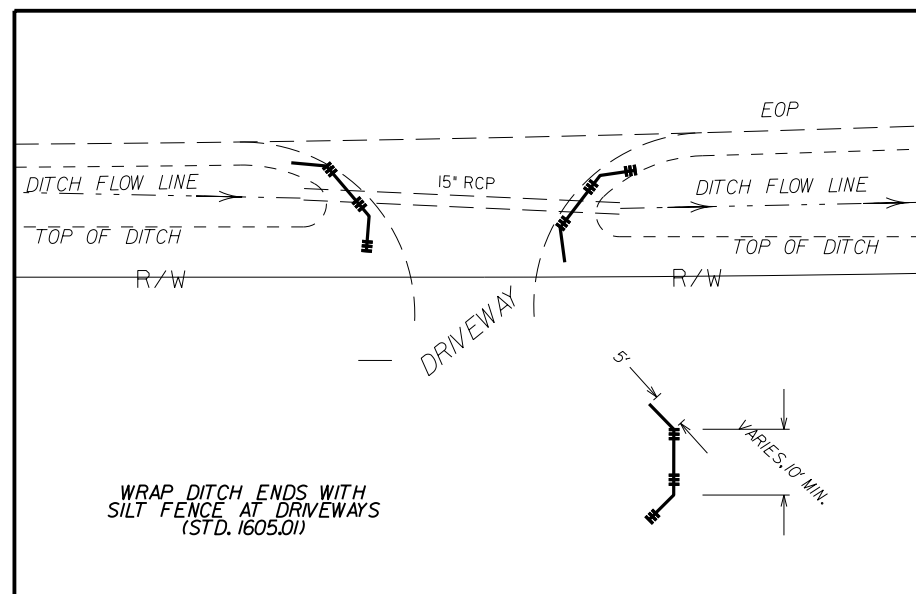
5501 Barbados Blvd.  
Castle Hayne, NC 28429  
By: Mary Kimmel, No. 3569

2012 STANDARD SPECIFICATIONS

**Roadway Standard Drawings**

The following roadway english standards as appear in "Roadway Standard Drawings"- Roadway Design Unit - N. C. Department of Transportation - Raleigh, N. C., dated January 2012 and the latest revision thereto are applicable to this project and by reference hereby are considered a part of these plans.

1604.01	Railroad Erosion Control Detail	1632.01	Rock Inlet Sediment Trap Type A
1605.01	Temporary Silt Fence	1632.02	Rock Inlet Sediment Trap Type B
1606.01	Special Sediment Control Fence	1632.03	Rock Inlet Sediment Trap Type C
1607.01	Gravel Construction Entrance	1633.01	Temporary Rock Silt Check Type A
1622.01	Temporary Berms and Slope Drains	1633.02	Temporary Rock Silt Check Type B
1630.01	Riser Basin	1634.01	Temporary Rock Sediment Dam Type A
1630.02	Silt Basin Type B	1634.02	Temporary Rock Sediment Dam Type B
1630.03	Temporary Silt Ditch	1635.01	Rock Pipe Inlet Sediment Trap Type A
1630.04	Stilling Basin	1635.02	Rock Pipe Inlet Sediment Trap Type B
1630.05	Temporary Diversion	1640.01	Coir Fiber Baffle
1630.06	Special Stilling Basin	1645.01	Temporary Stream Crossing
1631.01	Matting Installation		



### Stormwater Discharge Outfall (SDO)

SDO Number	Station	Distance from $\mathcal{C}$	Description
SDO-1	-L- 40+80	52' LT	ROCK INLET SED. TRAP "C"
SDO-2	-L- 41+16	64' RT	WATTLE
SDO-3	-Y2- 10+06	65' RT	WATTLE
SDO-4	-L2- 31+55	40' RT	WATTLE
SDO-5	-L2- 33+02	44' RT	WATTLE

### Permanent Liner (PSRM) in Ditchline

Station to Station	LT/RT $\mathcal{C}$	Matting Required (yds <sup>2</sup> )
-Y2- 10+00 TO 11+88	RT	160 SY

### Temporary Liner (Matting) in Ditchline

Station to Station	LT/RT $\mathcal{C}$	Matting Required (yds <sup>2</sup> )
-L- 37+91 TO 40+20	LT	420 SY
-L- 45+73 TO 46+80	LT	195 SY
-L1- 15+16 TO 15+50	RT	55 SY
-L1- 15+50 TO 16+26	RT	140 SY
-L2- 36+40 TO 36+91	LT	160 SY
-Y1- 11+25 TO 12+69	LT	175 SY
-Y2- 10+00 TO 11+88	RT	405 SY
-Y2- 13+31 TO 16+58	LT	685 SY
-Y4- 11+36 TO 12+30	LT	175 SY

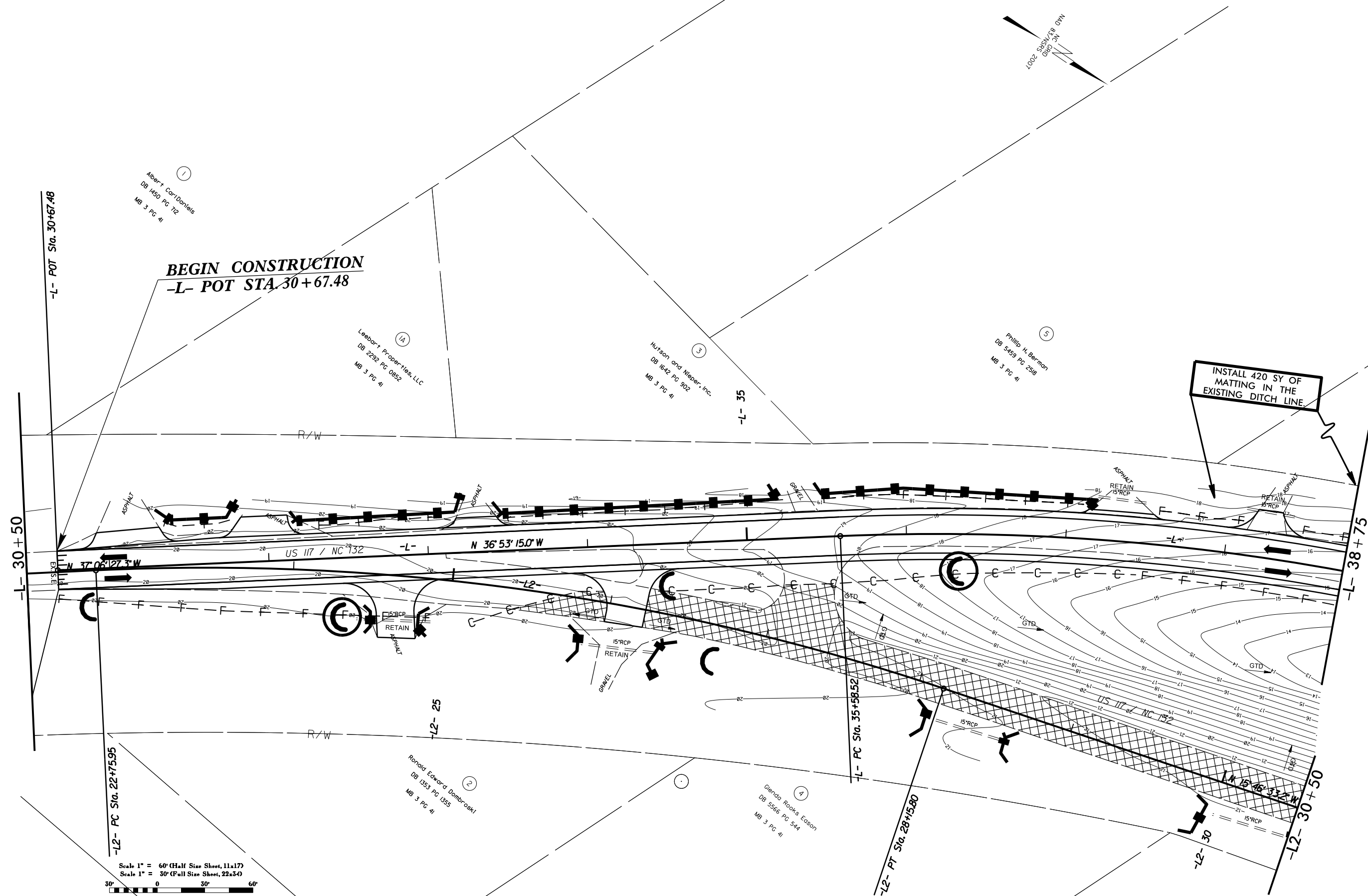
REVISIONS

8/17/99

04-AUG-2014 11:39 AM C:\ADK\01\FREE\NEW\_HANDOVER\Castle Hayne RAE\_46130\ROADWAY\Proj\PLAN\_SHEETS\W5306\_PSH\_EC\_2.dgn

04-AUG-2014 11:39 NEW\_HANDOVER\Castle Hayne RAE 46130\ROADWAY\Proj\PLAN\_SHEETS\W5306\_PSH-EC 3.dgn  
 DRAWN BY: J. H. HARRIS  
 CHECKED BY: J. H. HARRIS  
 8/17/99

REVISIONS



Scale 1" = 60' (Half Size Sheet, 11x17)  
 Scale 1" = 30' (Full Size Sheet, 22x34)  
 0 30 60

①  
 Albert Corp/Daniels  
 DB 1450 PG 712  
 MB 3 PG 41

①A  
 Leabart Properties, LLC  
 DB 2292 PG 0852  
 MB 3 PG 41

③  
 Hutson and Neiper, Inc.  
 DB 1642 PG 902  
 MB 3 PG 41

⑤  
 Phillip H. Berman  
 DB 5459 PG 258  
 MB 3 PG 41

②  
 Ronald Edward Dambroski  
 DB 1553 PG 1355  
 MB 3 PG 41

④  
 Glenda Rooks Eason  
 DB 5566 PG 544  
 MB 3 PG 41

INSTALL 420 SY OF  
 MATTING IN THE  
 EXISTING DITCH LINE.

**BEGIN CONSTRUCTION**  
**-L- POT STA. 30+67.48**

-L- POT Sta. 30+67.48

-L- 30+50

-L2- PC Sta. 22+75.95

-L2- 25

-L- PC Sta. 35+58.52

-L2- PT Sta. 28+15.80

-L- 38+75

-L2- 30

-L2- 30+50

R/W

R/W

-L- 35

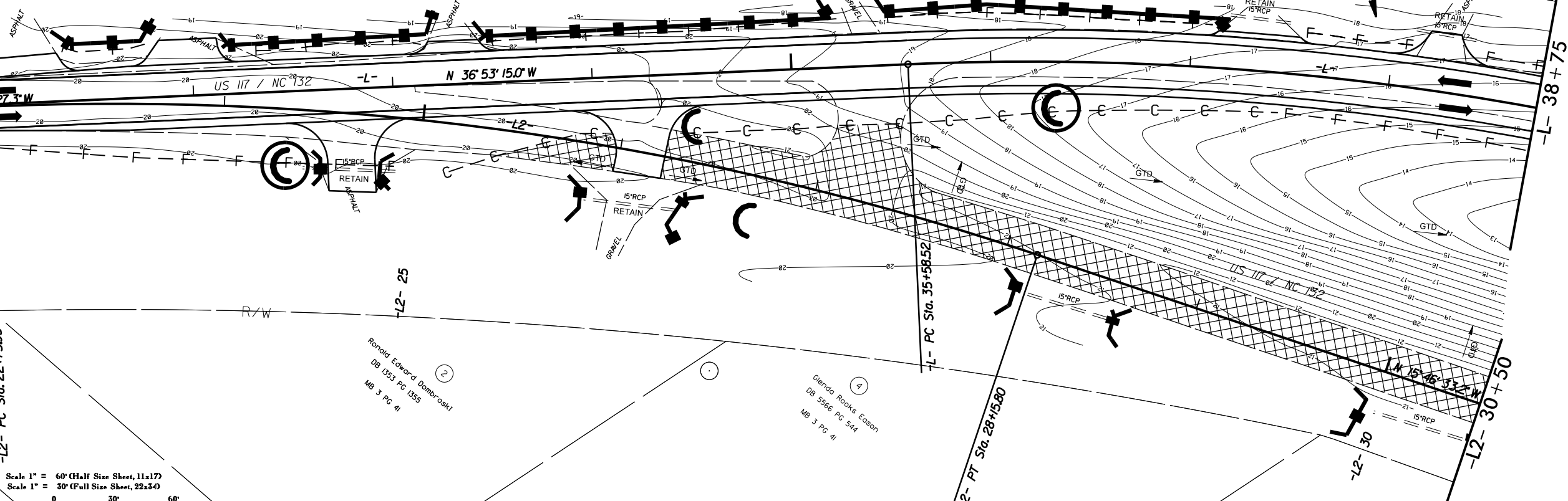
-L- N 36°53'15.0"W

N 37°06'12.3"W

US 117 / NC 132

US 117 - NC 132

N 15°46'32.2"W



8/17/99

Philip H. Bermon, Jr.  
DB 5459 PG 2516  
MB 34 PG 119

Philip H. Bermon, Jr.  
DB 5459 PG 2509  
MB 34 PG 119

INSTALL 420 SY OF  
MATTING IN THE  
EXISTING DITCH LINE.

INSTALL 685 SY OF  
MATTING IN THE  
EXISTING DITCH LINE.

INSTALL 55 SY OF  
MATTING IN THE  
EXISTING DITCH LINE.

INSTALL 140 SY OF  
MATTING IN THE  
EXISTING DITCH LINE.

INSTALL 195 SY OF  
MATTING IN THE  
EXISTING DITCH LINE.

INSTALL 405 SY OF  
MATTING IN THE  
EXISTING DITCH LINE.

INSTALL 160 SY OF  
MATTING IN THE  
EXISTING DITCH LINE.

1.5 inch Skimmer  
with 1.5 inch  
Orifice Diameter  
20 ft. weir with  
5.0 ft. weir height  
ID 1041\_Y2\_RT  
(See Earthen Dam  
with Skimmer Detail)

Scale 1" = 60' (Half Size Sheet, 11x17)  
Scale 1" = 30' (Full Size Sheet, 22x34)



South Castle Hayne / Westview Properties  
DB 1443 PG 1470  
MB 3 PG 41

NANETTE VEREEN  
DB 2842 PG 272  
MB 3 PG 41

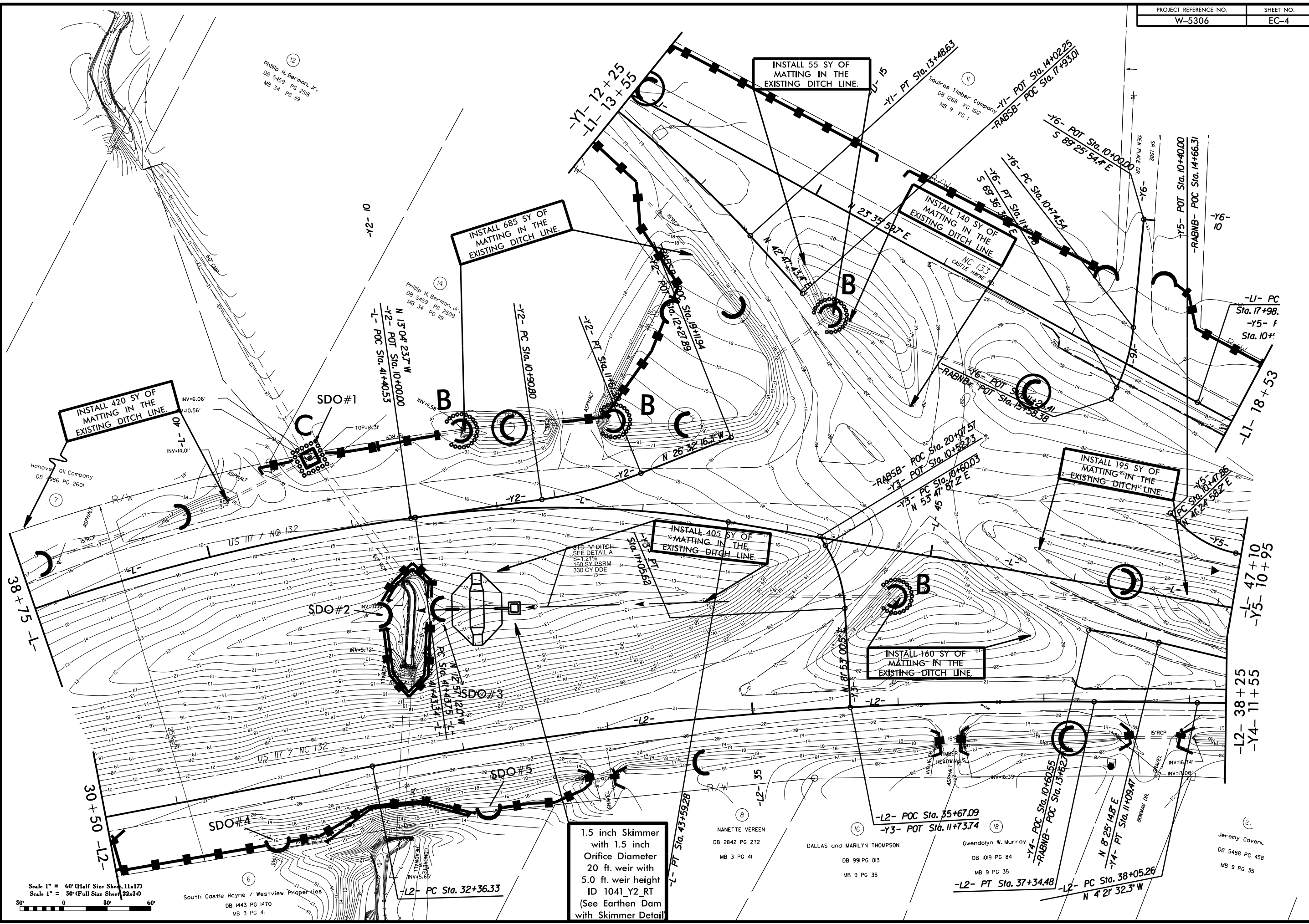
DALLAS and MARILYN THOMPSON  
DB 991 PG 813  
MB 9 PG 35

Gwendolyn W. Murray  
DB 1019 PG 84  
MB 9 PG 35

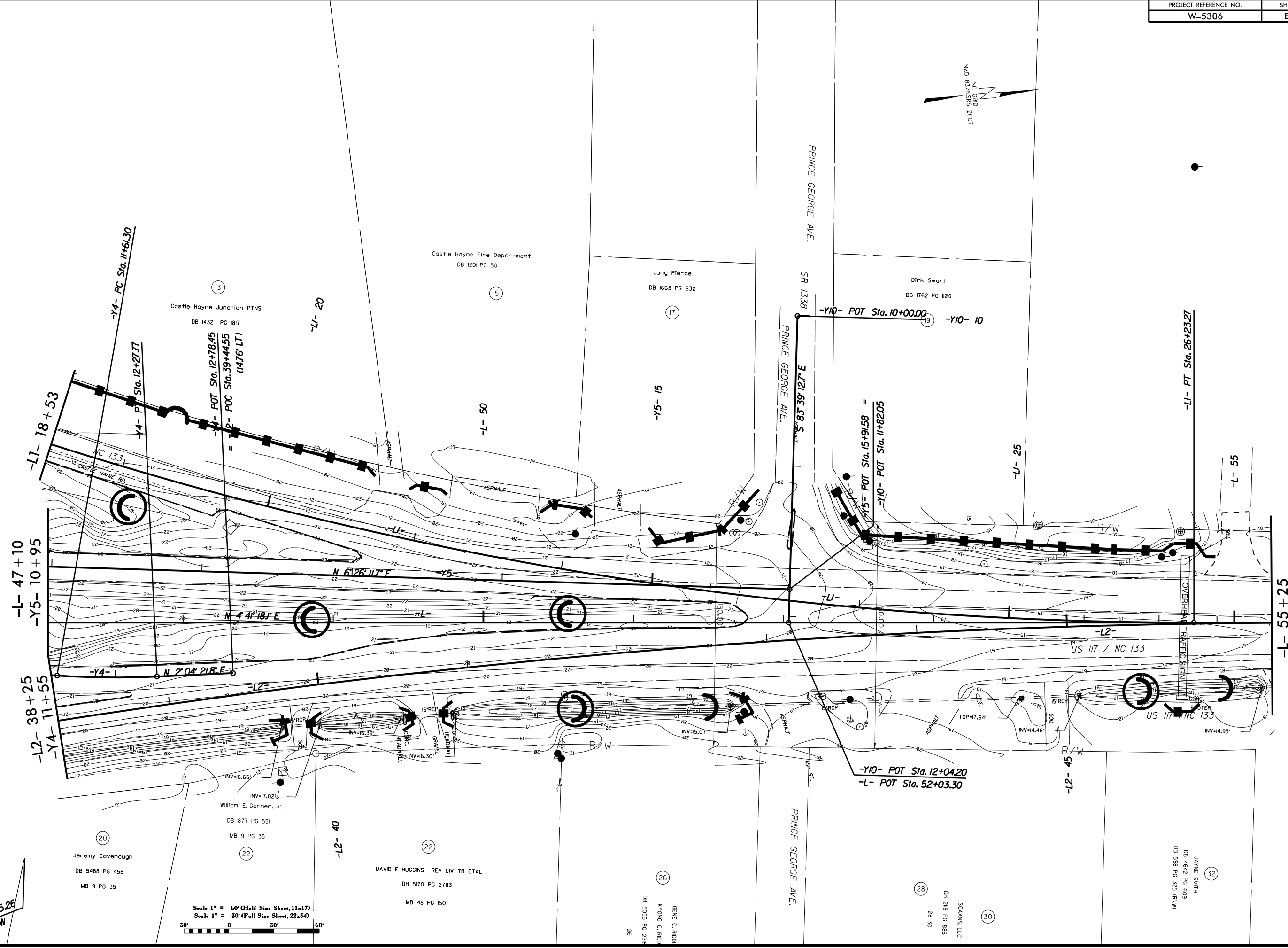
Jeremy Caven  
DB 5488 PG 458  
MB 9 PG 35

REVISIONS

04-AUG-2014 11:33 NEW\_HANOVER\Castle Hayne RAE 46130\ROADWAY\Proj\PLAN\_SHEETS\W5306\_PSH\_PHASE 1.EC 4.dgn  
 04-AUG-2014 11:33 NEW\_HANOVER\Castle Hayne RAE 46130\ROADWAY\Proj\PLAN\_SHEETS\W5306\_PSH\_PHASE 1.EC 4.dgn



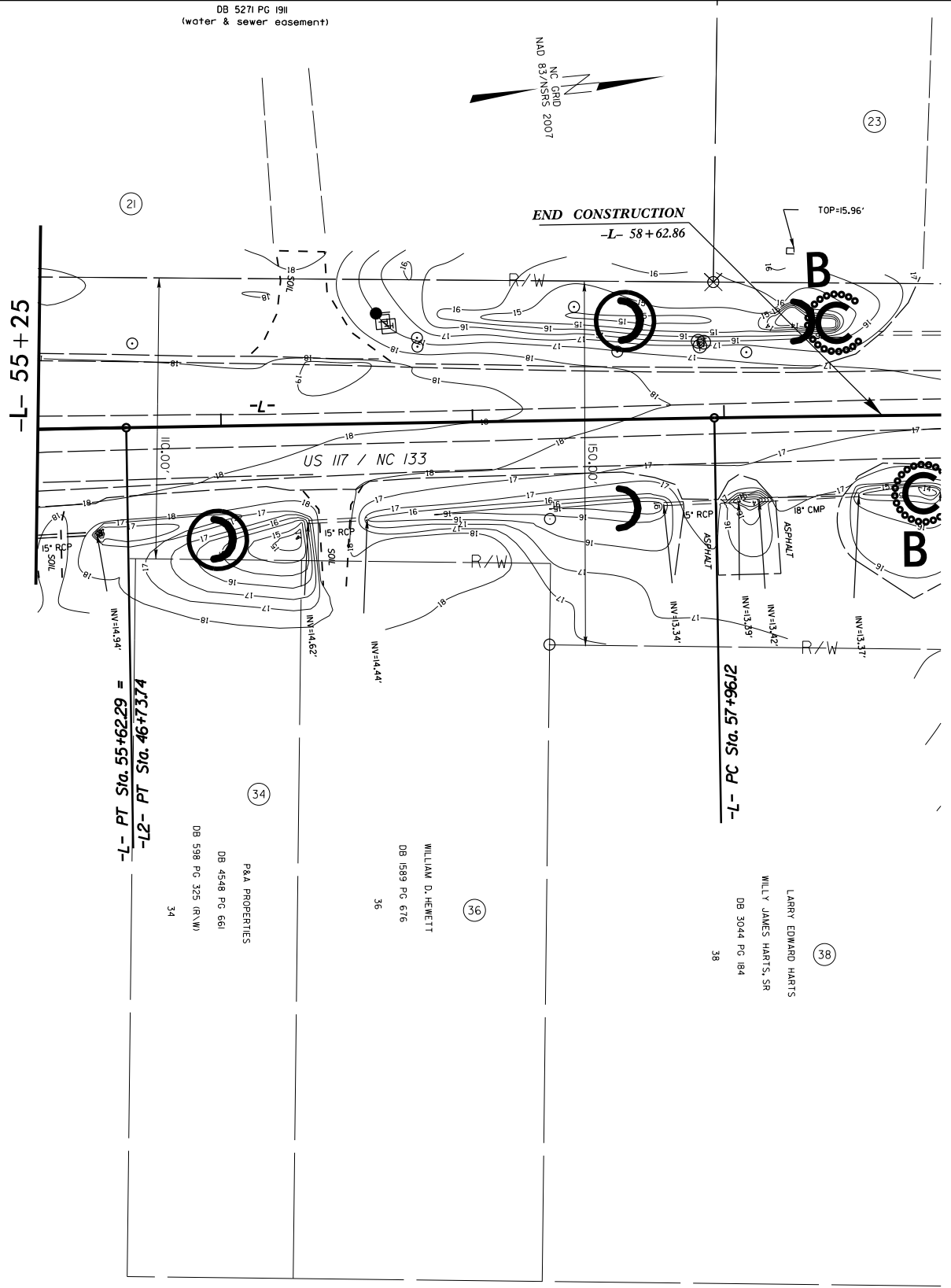
04-AUG-2014 11:39 NEW\_HANOVER\Castle Hayne RAE 46130\ROADWAY\Proj\PLAN\_SHEETS\W5306\_PSH\_PHASE 1.EC 5.dgn  
 8/17/99  
 526  
 3' W



Scale 1" = 60' (Half Size Sheet, 11x17)  
 Scale 1" = 30' (Full Size Sheet, 22x34)



REVISIONS



-L- PT Sta. 55+62.29 =  
-L2- PT Sta. 46+73.74

-L- PC Sta. 57+96.12

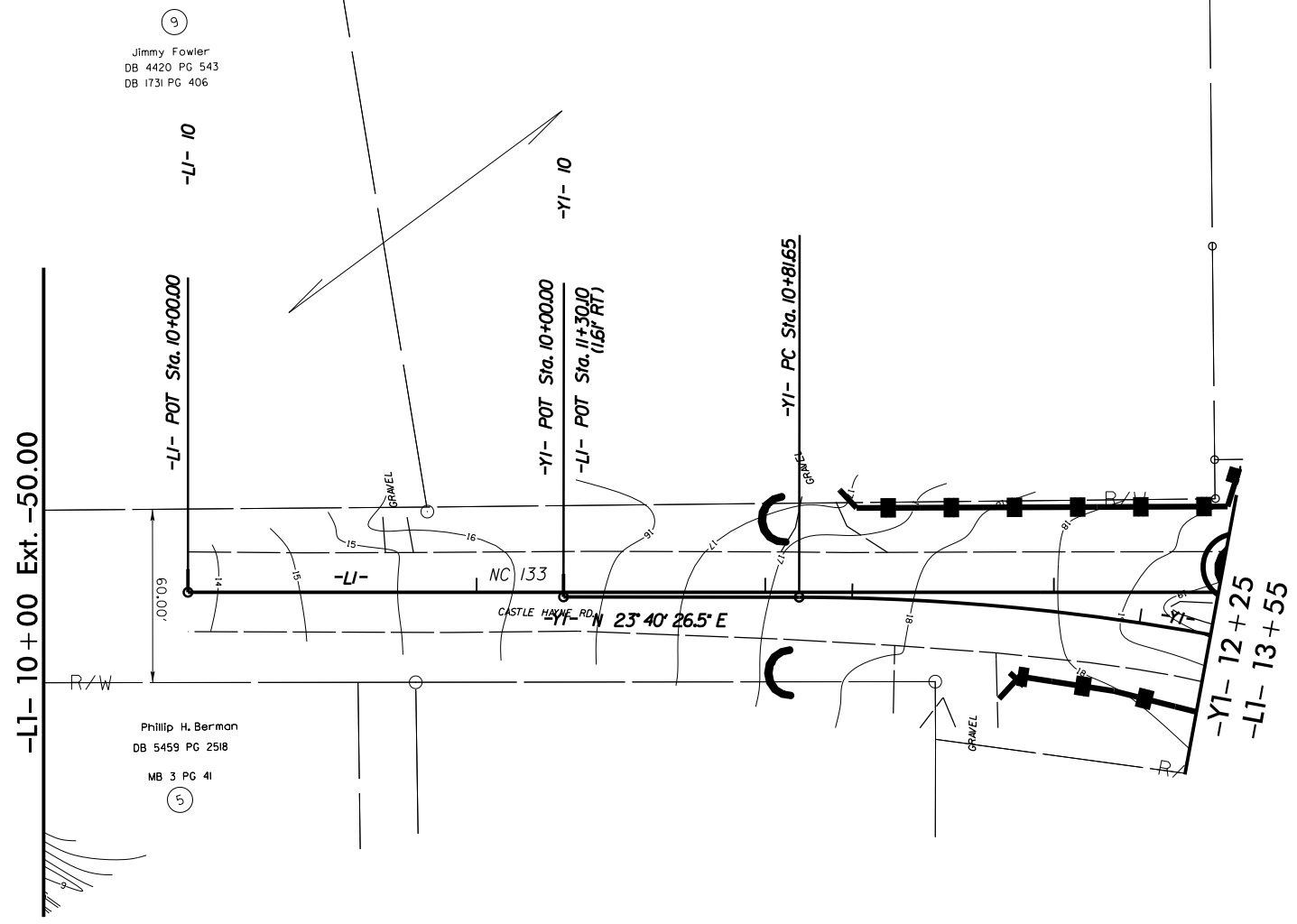
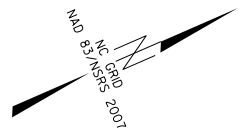
REVISIONS

04-AUG-2014 11:39 NEW\_HANOVER\Castle Hayne RAE\_46130\ROADWAY\Proj\PLAN\_SHEETS\W5306\_PSH\_EC\_6.dgn  
 DB 5271 PG 191 (water & sewer easement)

Scale 1" = 60' (Half Size Sheet, 11x17)  
 Scale 1" = 30' (Full Size Sheet, 22x34)



8/17/99



9  
Jimmy Fowler  
DB 4420 PG 543  
DB 1731 PG 406

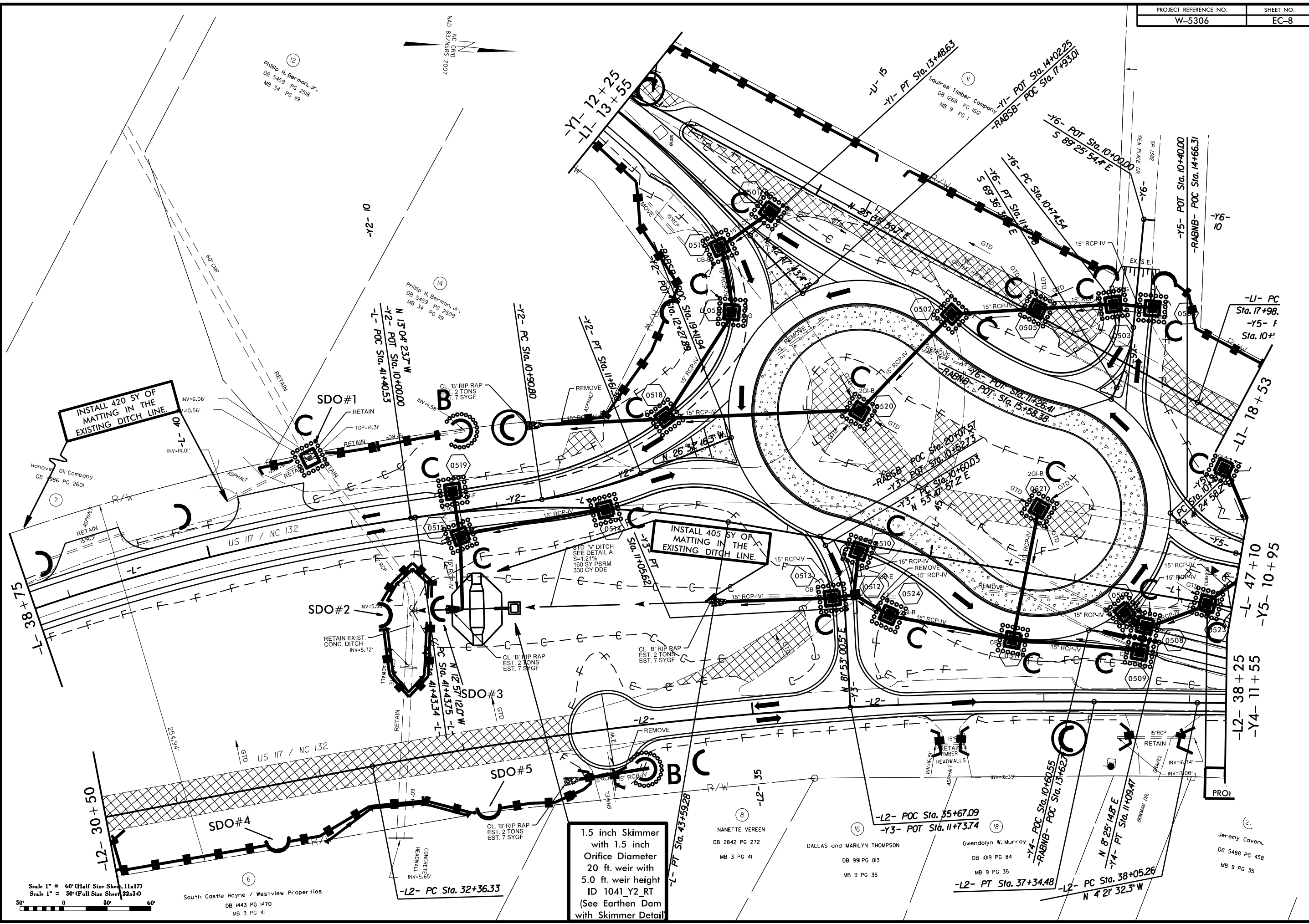
5  
Phillip H. Berman  
DB 5459 PG 2518  
MB 3 PG 41

REVISIONS

04-AUG-2014 11:33 NEW\_HANOVER\Castle Hayne RAE\_46130\ROADWAY\Proj\PLAN\_SHEETS\W5306-PSH-PHASE 1.EC 7.dgn

Scale 1" = 60' (Half Size Sheet, 11x17)  
Scale 1" = 30' (Full Size Sheet, 22x30)

04-AUG-2014 11:33 NEW\_HANOVERCastle Hayne RAE 46130\ROADWAY\Proj\PLAN\_SHEETS\W5306\_PSH\_PHASE 2.EC B.dgn  
 8/17/99  
 REVISIONS



INSTALL 420 SY OF MATTING IN THE EXISTING DITCH LINE.

INSTALL 405 SY OF MATTING IN THE EXISTING DITCH LINE.

1.5 inch Skimmer with 1.5 inch Orifice Diameter 20 ft. weir with 5.0 ft. weir height ID 1041\_Y2\_RT (See Earthen Dam with Skimmer Detail)

Scale 1" = 60' (Half Size Sheet, 11x17)  
 Scale 1" = 30' (Full Size Sheet, 22x34)

South Castle Hayne / Westview Properties  
 DB 1443 PG 1470  
 MB 3 PG 41

NANETTE VEREEN  
 DB 2842 PG 272  
 MB 3 PG 41

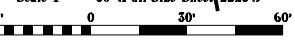
DALLAS and MARILYN THOMPSON  
 DB 991 PG 83  
 MB 9 PG 35

Gwendolyn W. Murray  
 DB 1019 PG 84  
 MB 9 PG 35

Jeremy Caven  
 DB 5488 PG 458  
 MB 9 PG 35

Philip H. Berman, Jr.  
 DB 5459 PG 2518  
 MB 34 PG 119

Philip H. Berman, Jr.  
 DB 5459 PG 2509  
 MB 34 PG 119

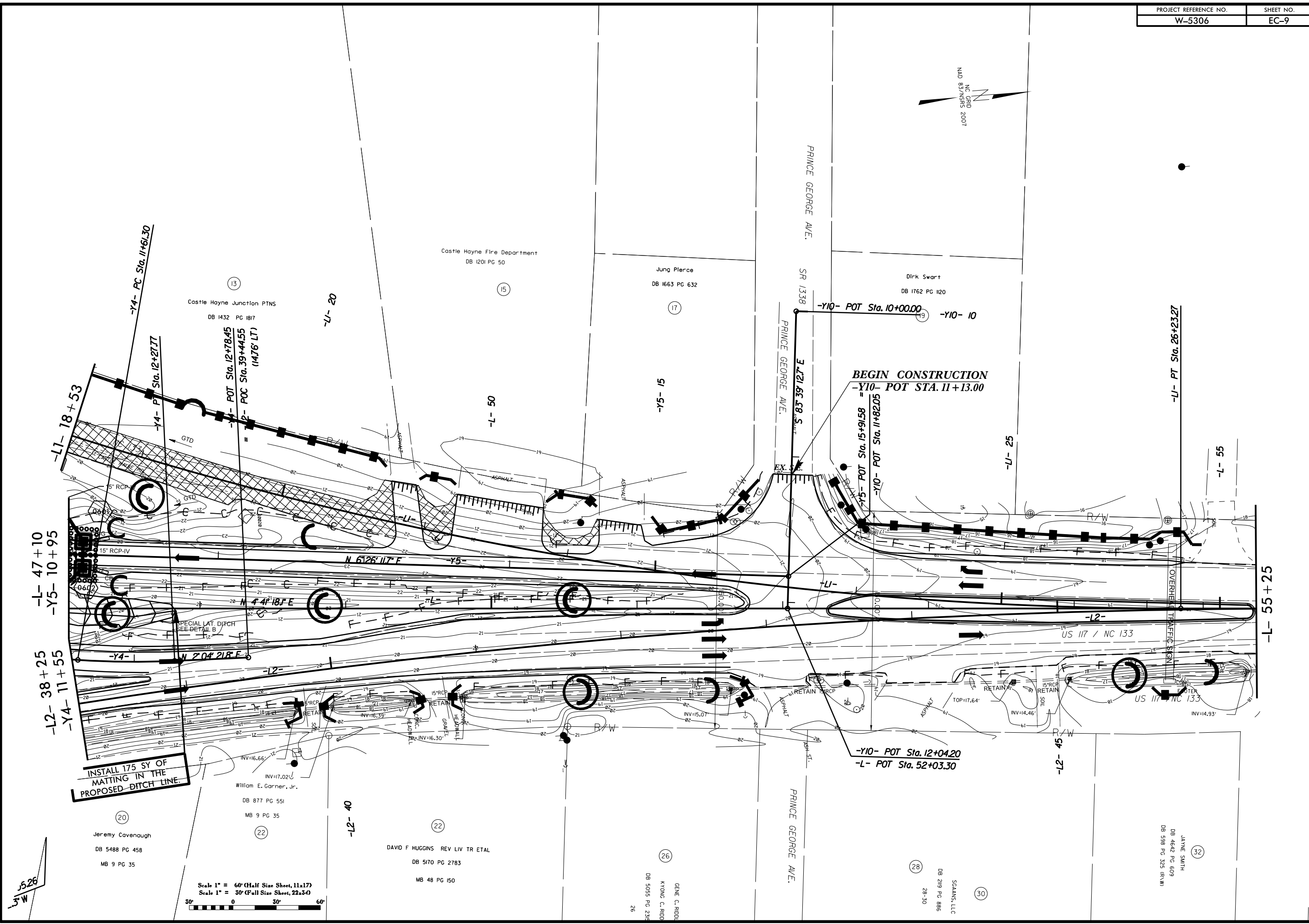




8/17/99

REVISIONS

04-AUG-2014 11:40 NEW\_HANDOVER\Castle Hayne RAE 46130\ROADWAY\Proj\PLAN\_SHEETS\W5306\_PSH\_PHASE 2.EC 9.dgn  
 DR:ADK DT:FREE  
 81 10/12/2014



526  
3' W

Scale 1" = 60' (Half Size Sheet, 11x17)  
 Scale 1" = 30' (Full Size Sheet, 22x34)

JAYNE SMITH  
 DB 4642 PG 609  
 DB 598 PG 325 (R/W)

04-AUG-2014 11:40 NEW\_HANOVER\Castle Hayne RAE\_46130\ROADWAY\Proj\PLAN\_SHEETS\W5306-PSH\_PHASE 2.EC 10.dgn  
 8/17/99  
 REVISIONS

